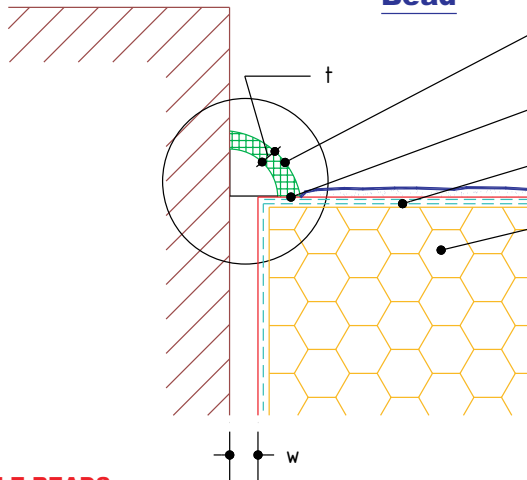


Angle Bead

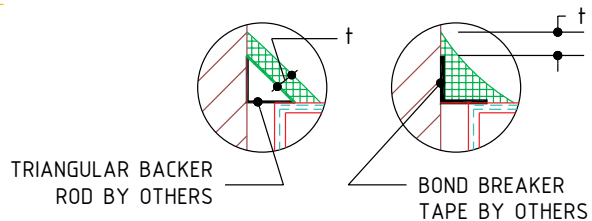


FOR ANGLE BEADS:

$t = 6.4 \text{ mm (1/4") min.}$
 $w = \text{specified by manufacturer of abutting material but not less than } 3.2 \text{ mm (1/8")}$

- DRYVIT COMPATIBLE SEALANT WITH QUARTER ROUND BACKER ROD, BY OTHERS (REFER TO OTHER OPTIONS BELOW)
- DRYVIT DEMANDIT® OR COLOR PRIME™ ON SURFACES TO RECEIVE SEALANT
- DRYVIT REINFORCING MESH EMBEDDED IN DRYVIT BASE COAT (SEE NOTE 3)
- EPS INSULATION BOARD

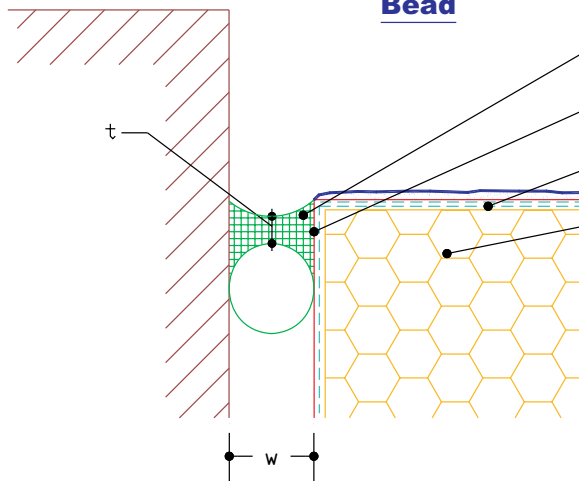
Angle Bead Bond Breaker Options



TRIANGULAR BACKER ROD BY OTHERS

BOND BREAKER TAPE BY OTHERS

Rectangular Bead



FOR RECTANGULAR BEADS:

$t = 6.4 \text{ mm (1/4") min.}$
 $w = 12.7 \text{ mm (1/2") min.}$
 $w/t = 2:1$

- DRYVIT COMPATIBLE SEALANT WITH CLOSED CELL BACKER ROD, BY OTHERS
- DRYVIT DEMANDIT OR COLOR PRIME ON SURFACE(S) TO RECEIVE SEALANT
- DRYVIT REINFORCING MESH EMBEDDED IN DRYVIT BASE COAT (SEE NOTE 3)
- EPS INSULATION BOARD

Outsulation® RMD System™

Sealant Configuration Options

NOTES:

1. WEATHER SEAL JOINTS SUCH AS AT WINDOW AND DOOR PERIMETERS CAN USE ANGLE OR RECTANGULAR BEADS. RECTANGULAR BEADS USED AS A WEATHERSEAL REQUIRE A MINIMUM 13 MM (1/2") WIDTH.
2. EXPANSION JOINTS SHALL USE RECTANGULAR BEADS AND BE DESIGNED FOR MINIMUM FOUR TIMES THE ANTICIPATED MOVEMENT, BUT NOT LESS THAN 19 MM (3/4").
3. DRYVIT GENESIS® OR GENESIS DM SHALL BE USED AS THE BASE COAT WHEN INSTALLING SYSTEMS WITH MECHANICAL FASTENERS.

The architecture, engineering and design of the project using the Dryvit products is the responsibility of the project's design professional. All systems must comply with local building codes and standards. This detail is for general information and guidance only and Dryvit specifically disclaims any liability for the use of this detail and for the architecture, design, engineering or workmanship of any project. The project design professional determines, in its sole discretion, whether this detail or a functionally equivalent alternative is best suited for the project. Use of a functionally equivalent detail does not violate Dryvit's warranty. This detail is subject to change without notice. Contact Dryvit to insure you have the most recent version.

APPROVED BY:	REV:	DATE:
RS	6	02/08

