

Direct Applied Finishes

Section: 07240

NEW!



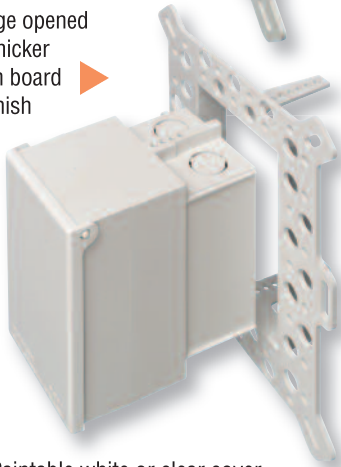
PCDBVME1W
with fixed flange

PCDBVMA1W
with adjustable flange

Flange in position for thin foam or finish thickness



Flange opened for thicker foam board or finish



- Paintable white or clear cover
- UL/CSA Listed weatherproof while in use
- Meets NEC 2005 (National Electric Code)

Low Profile, Recessed Electrical Box

Product Number	Dimensions/Description	Flange Style	Cover Color
PCDBVME1C	IN BOX™ Electrical box for 1-1/2" (38 mm) EIFS and DEFS foam wall systems.	Fixed	Clear
PCDBVME1W		Fixed	White
PCDBVMA1C	For EIFS and DEFS foam wall systems up to 2" (51 mm) thick.	Adjustable	Clear
PCDBVMA1W		Adjustable	White

Patent pending - Arlington Industries, Inc.

Arlington Industries' IN BOX for EIFS and DEFS is now available from Plastic Components! These one-piece electrical boxes save labor time, and because IN BOX installs in the wall, you'll get a great-looking job too. The cover protrudes from the wall just enough to provide a neat, clean appearance.

The **fixed-flashing style** IN BOX offers superior moisture control in 1-1/2" foam wall systems. It has a large, built-in flange that eliminates the need for a separate flashing.



For foam board up to 2" thick



For 1-1/2" thick foam board



The **adjustable flange style** adjusts to fit any foam board thickness or custom finish in concrete block and stucco applications.

For finishes 1/4" to 2.5" thick on walls 2.75" to 5" deep.

Application:

Offers aesthetic value as a low profile, non-metallic electrical box that installs IN the wall. The cover protrudes approximately 3/4" from the surface of the wall, depending on the thickness of the stucco finish.

Specification:

Non-metallic electrical box shall be Plastic Components, Inc. InBox # _____.
Made of UV rated, PVC material. UL and CSA Listed.



Shipped-in-place disposable mud cover

Caulk all butt joints, intersections and ends.



800.327.7077
www.plasticcomponents.com