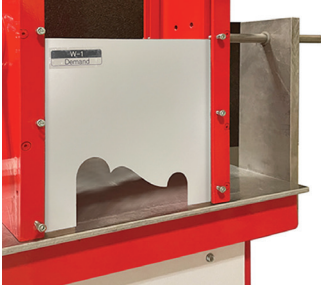


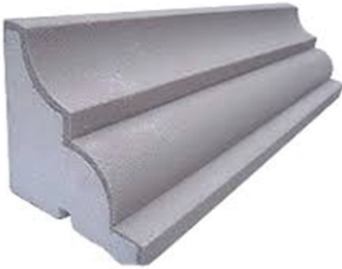
EZ COAT PRO[™]

Template

(Ask about our design template selections)



Coated Shape (example)



EZ COAT PRO - Automatic Foam Coater

- EZ Coat Pro will coat EPS Shapes with a polymer modified cementitious basecoat resulting in smooth crisp consistent finish.
- EZ Coat improves efficiency resulting in reduced labor costs.
- EZ Coat provides great looking shapes for use in both residential and commercial construction.

Features:

- Heavy duty aluminum construction
- Adjustable feed guides
- Continuous feed, up to 48 linear feet per min
- Fully adjustable speed control
- Forward and reverse movement
- Emergency stop safety feature
- Operates at 220 volts Single Phase
- Includes 2 sets of sample templates
- Lifetime Technical Support
- 1 year warranty

Technical Specifications:

- | | |
|-----------------------------|---------------------------------|
| • Power Requirements | 230v Single Phase |
| • Maximum shape height | 15 inches |
| • Maximum shape width | 40 inches |
| • Actual working table size | Depends on size of e-coater |
| • Max speed | Up to 48 linear feet per minute |
| • Safety Certification | CE |

3 New Machine Sizes

EC1414	Max shape size 14" x 14"
EC2215	Max shape size 22" x 15"
EC4015	Max shape size 40" x 15"

CREATING SOLUTIONS FOR THE FOAM INDUSTRY

DEMAND[™]
M A C H I N E R Y